

AUTO CALIBRATION INSTRUCTIONS

SMARTPRO GEM-EYE I v2.0

Step 1: Cleaning the probe tip

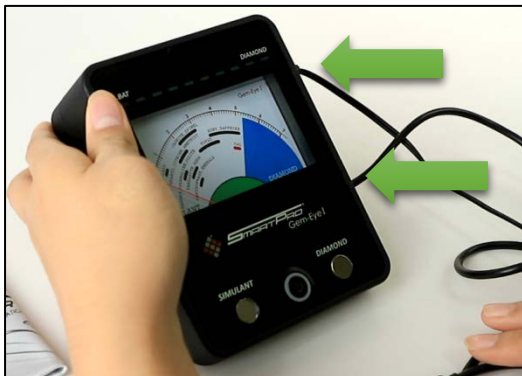
Please note that if the tester is being used for the first time, or if the tester has not been used for a week, it is advisable to clean the probe tip using an oxidation removal sheet to attain consistent and accurate reading. Rub the tip gently across the paper surface before testing.

- Ensure the unit is switched off.
- Clean the probe tip using Oxidation Removal Sheet or any paper. Gently point Pen's tip on the paper perpendicularly (90 deg) and move in a circular motion without retracting the tip.
- Repeat the same motion several times.



Step 2: Connections

Plug the Probe Pen (with tip cover) then insert AAA x 3 Batteries at the back of the tester or plug the power adapter into the tester.



Step 3: Warming up the tester

Turn ON the tester and wait while the Probe Pen is warming up. The needle indicator should move smoothly from number 0 to 7 for 2 times and the LEDs will run while warming up. Close the probe tip with cover to warm up faster

Wait for the Bluetooth (Blue) LED and 1st Green LED to light up together.



Step 4: Cleaning the Glass and Simulant Test Disc

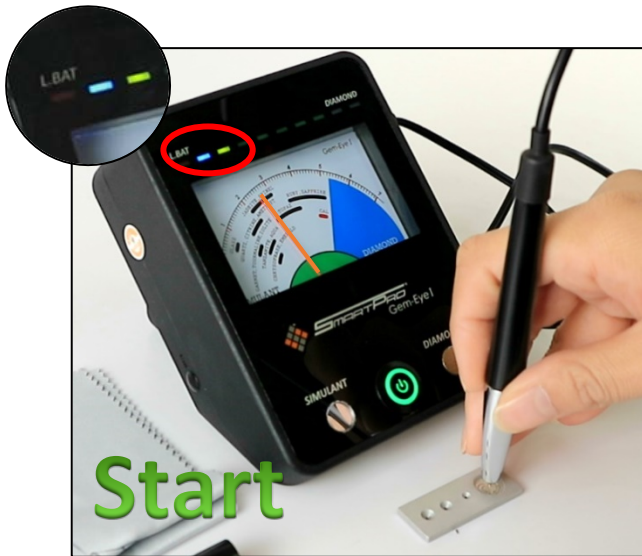
Wipe the Glass and Simulant Test Disc with a clean cloth for several times before the calibration.



Step 5: Glass Calibration

When the BT LED and 1st Green LED lights ON, remove the Probe Pen Cover then test the glass disc, and wait to finish the first calibration.

- ❖ Important Note: Do not remove the probe onto the Glass until the 1st Green is turned OFF. The Needle should reach within the Glass Line position.



Step 6: Simulant Disc Calibration

When the BT LED and 6th Green LED lights ON, test the Simulant Test Disc and wait to finish the final calibration.

- ❖ Important Note: Do not remove the probe onto the Simulant Disc until the Bluetooth LED (Blue) is turned OFF. The Needle should reach within the CAL line position.

There will be beep sounds with a blink of Diamond LEDs that indicates the calibration is done. Note: Prior testing, clean the GemStone to be tested with a Clean Cloth to have accurate results.

If the Calibration is unsuccessful, restart the tester and recalibrate.